

**GREEN
LIFTER**

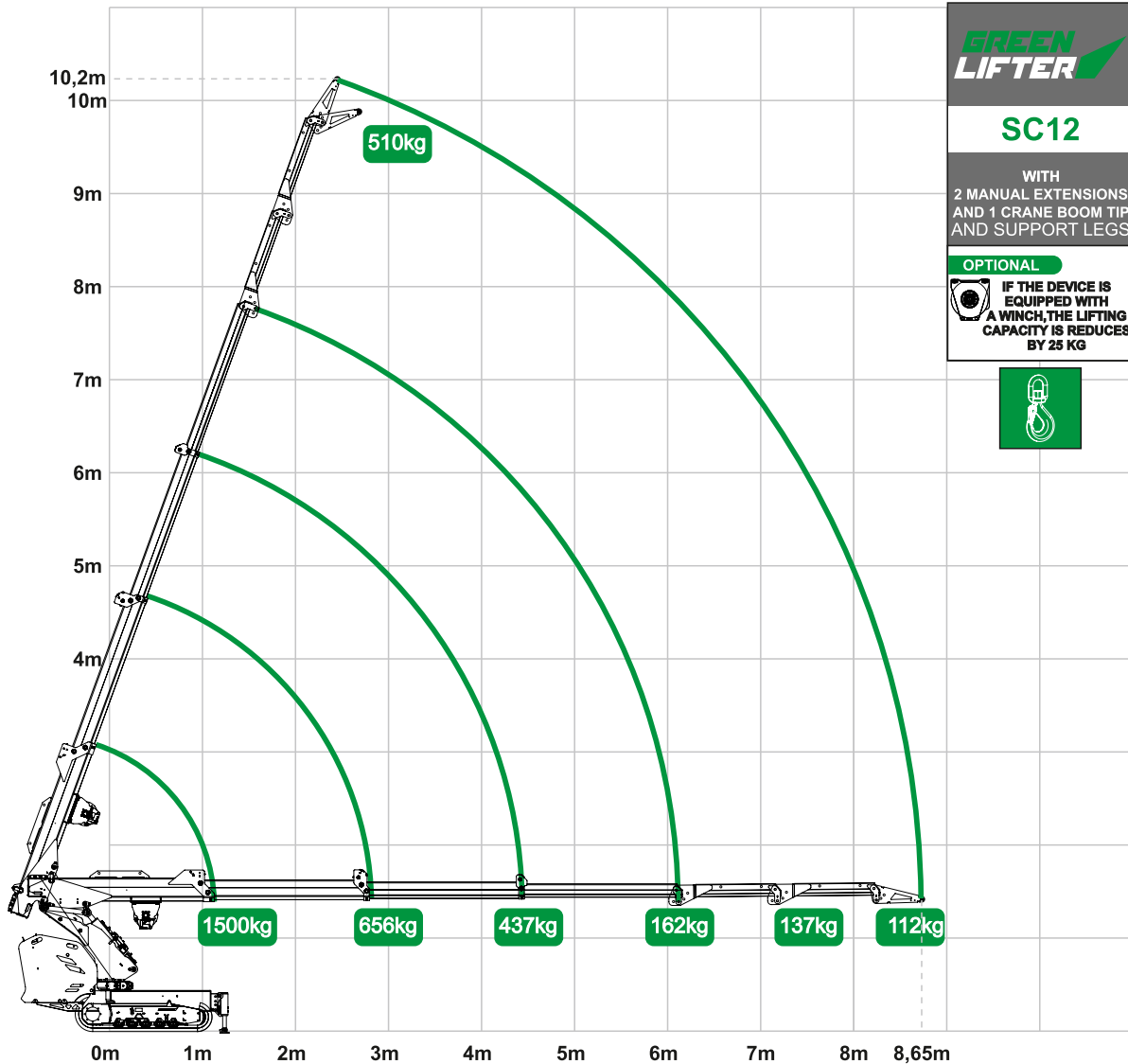
SC12

WITH
2 MANUAL EXTENSIONS
AND 1 CRANE BOOM TIP
AND SUPPORT LEGS

OPTIONAL



IF THE DEVICE IS
EQUIPPED WITH
A WINCH, THE LIFTING
CAPACITY IS REDUCES
BY 25 KG



**GREEN
LIFTER**

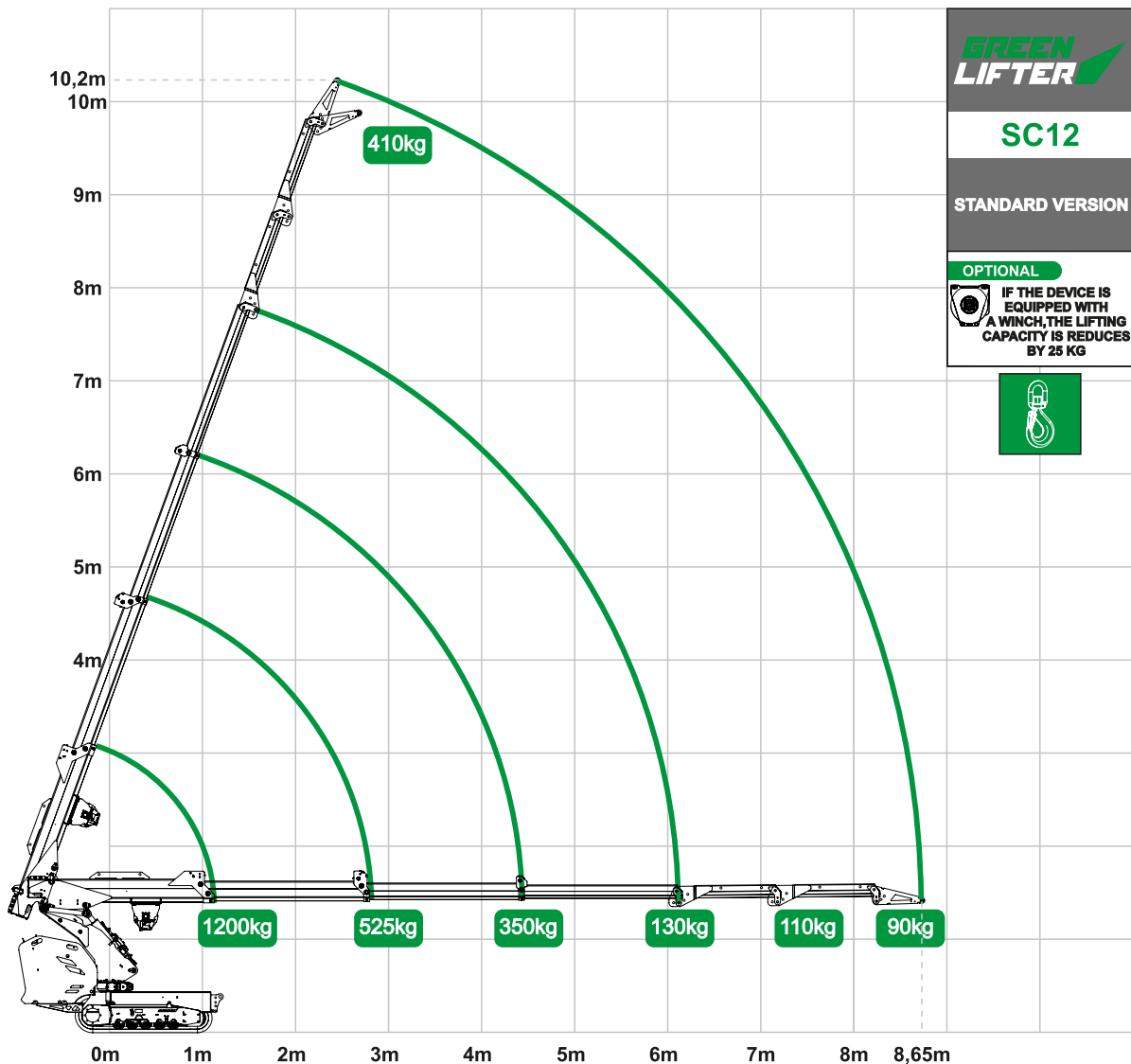
SC12

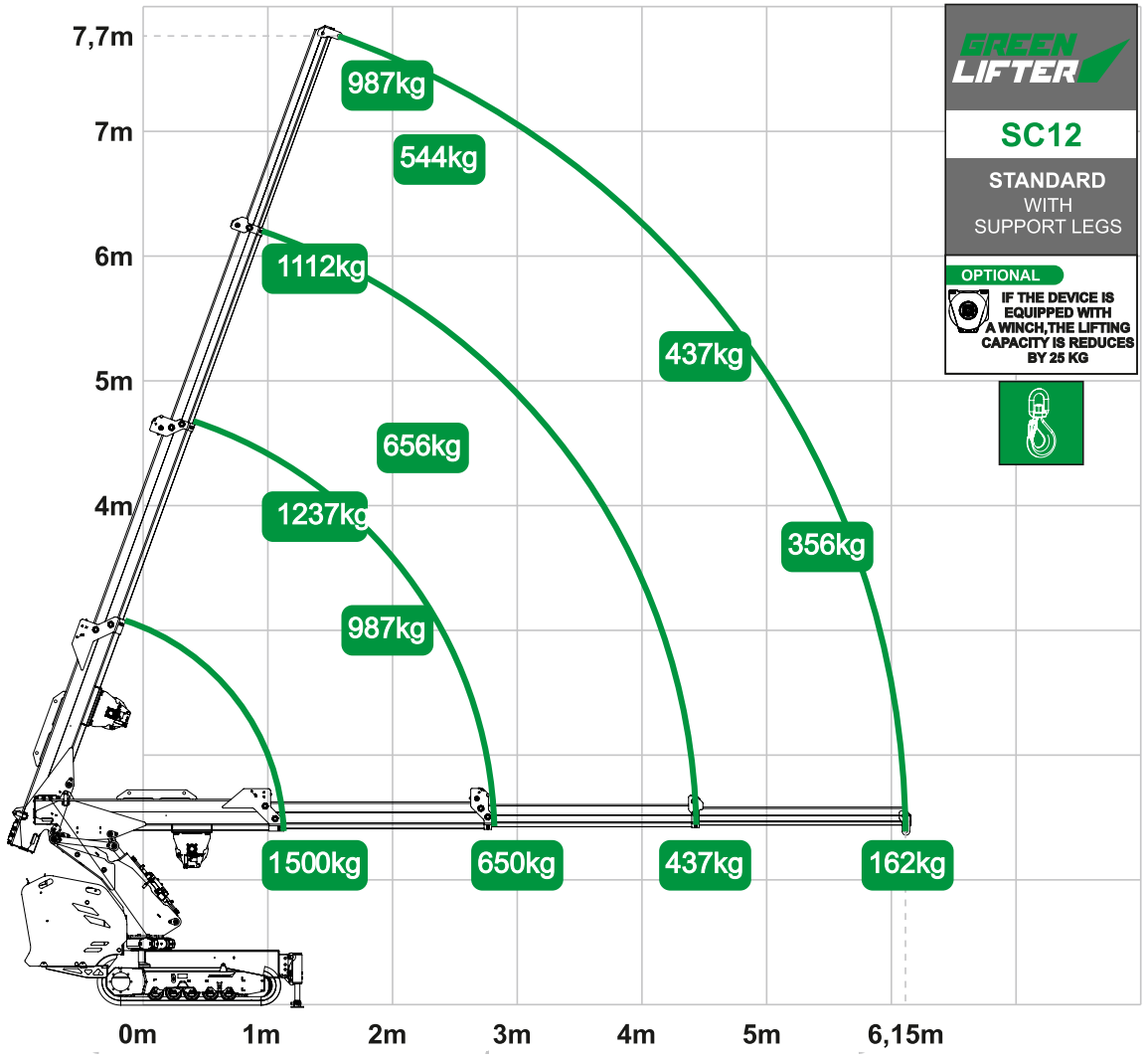
STANDARD VERSION

OPTIONAL



IF THE DEVICE IS
EQUIPPED WITH
A WINCH, THE LIFTING
CAPACITY IS REDUCES
BY 25 KG





GREEN LIFTER

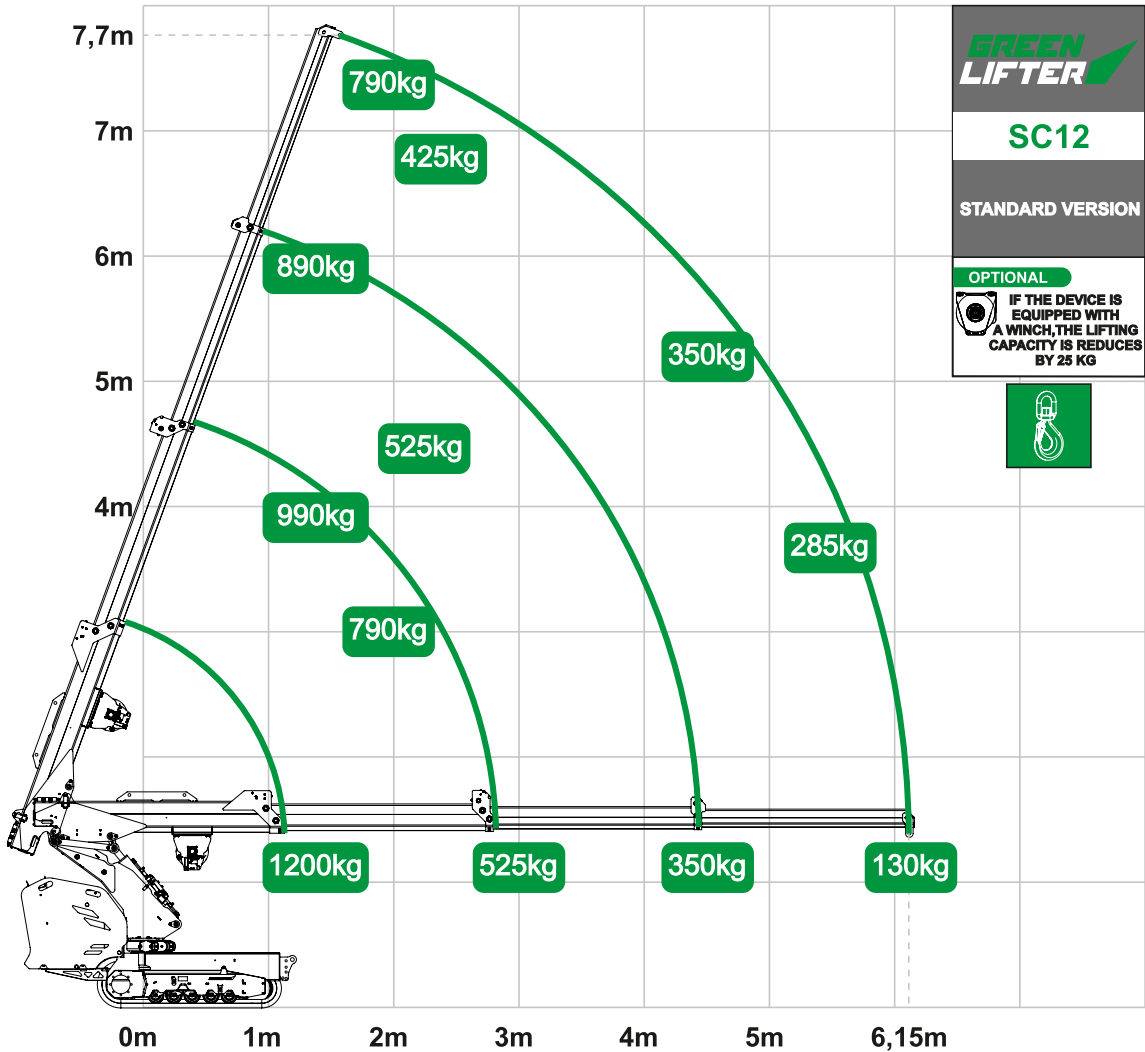
SC12

STANDARD WITH SUPPORT LEGS

OPTIONAL

IF THE DEVICE IS EQUIPPED WITH A WINCH, THE LIFTING CAPACITY IS REDUCES BY 25 KG





GREEN LIFTER

SC12

STANDARD VERSION

OPTIONAL

IF THE DEVICE IS EQUIPPED WITH A WINCH, THE LIFTING CAPACITY IS REDUCES BY 25 KG

