

**GREEN  
LIFTER**

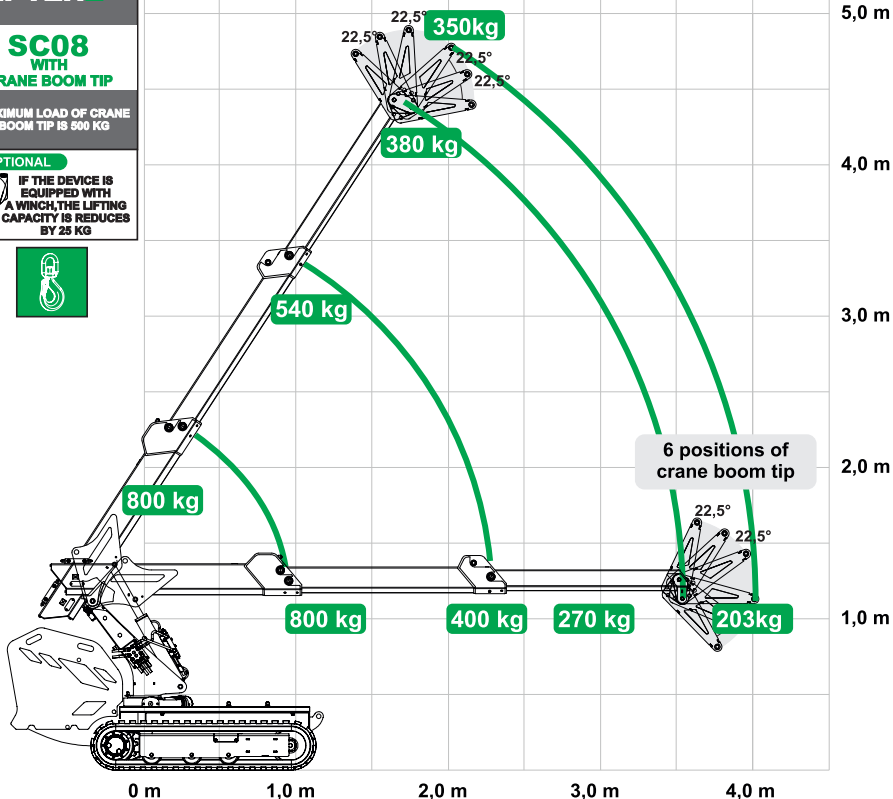
**SC08  
WITH  
CRANE BOOM TIP**

MAXIMUM LOAD OF CRANE  
BOOM TIP IS 500 KG

**OPTIONAL**



IF THE DEVICE IS  
EQUIPPED WITH  
A WINCH, THE LIFTING  
CAPACITY IS REDUCES  
BY 25 KG



**GREEN  
LIFTER**

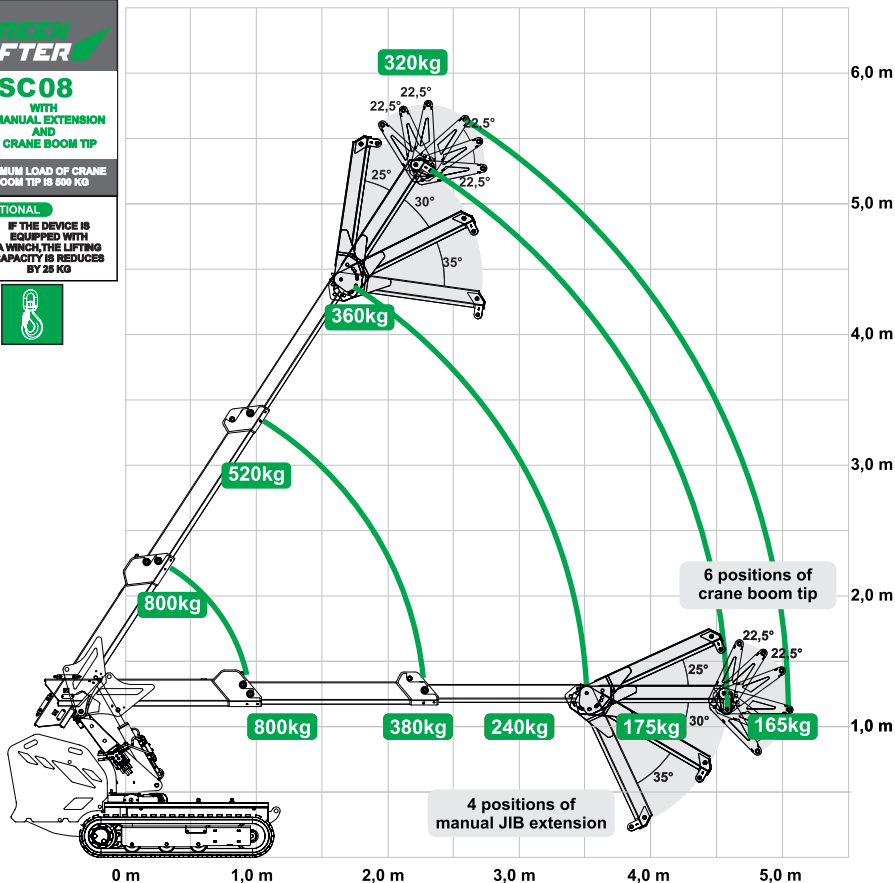
## SC08

WITH  
1. MANUAL EXTENSION  
AND  
2. CRANE BOOM TIP

MAXIMUM LOAD OF CRANE  
BOOM TIP IS 800 KG

### OPTIONAL

IF THE DEVICE IS  
EQUIPPED WITH  
A WINCH, THE LIFTING  
CAPACITY IS REDUCES  
BY 25 KG



**GREEN LIFTER**

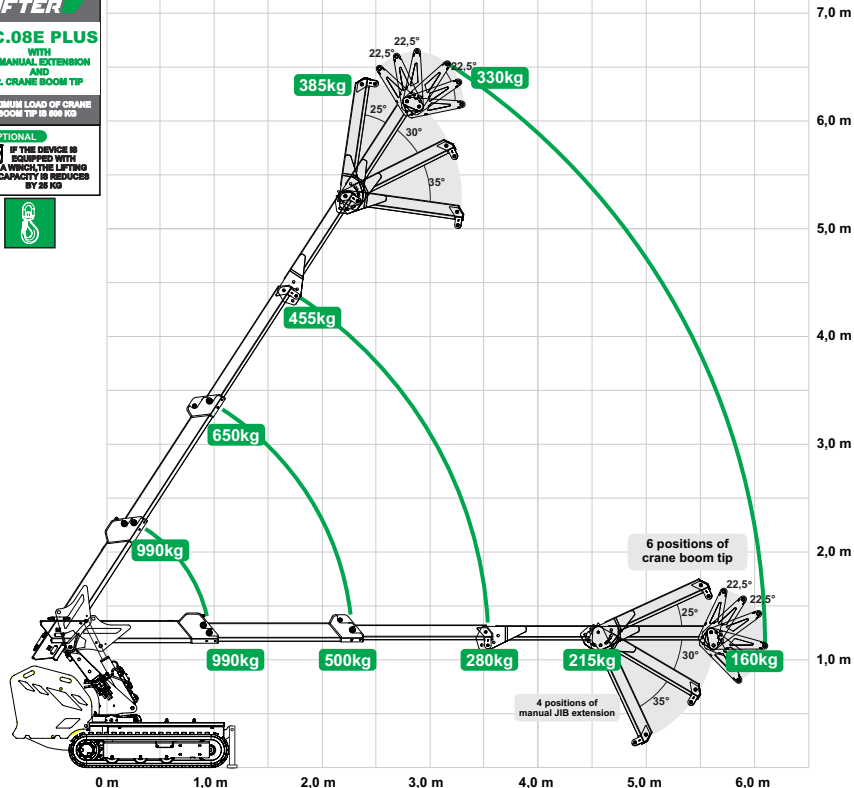
**SC.08E PLUS**

WITH  
1. MANUAL EXTENSION  
AND  
2. CRANE BOOM TIP

MAXIMUM LOAD OF CRANE  
BOOM TIP IN 800 KG

**OPTIONAL**

IF THE DEVICE IS  
EQUIPPED WITH  
A WINCH, THE LIFTING  
CAPACITY IS REDUCES  
BY 20 KG

Stationary only work - not pick and carry. Work only with unfolded (open) support legs.

**GREEN  
LIFTER**

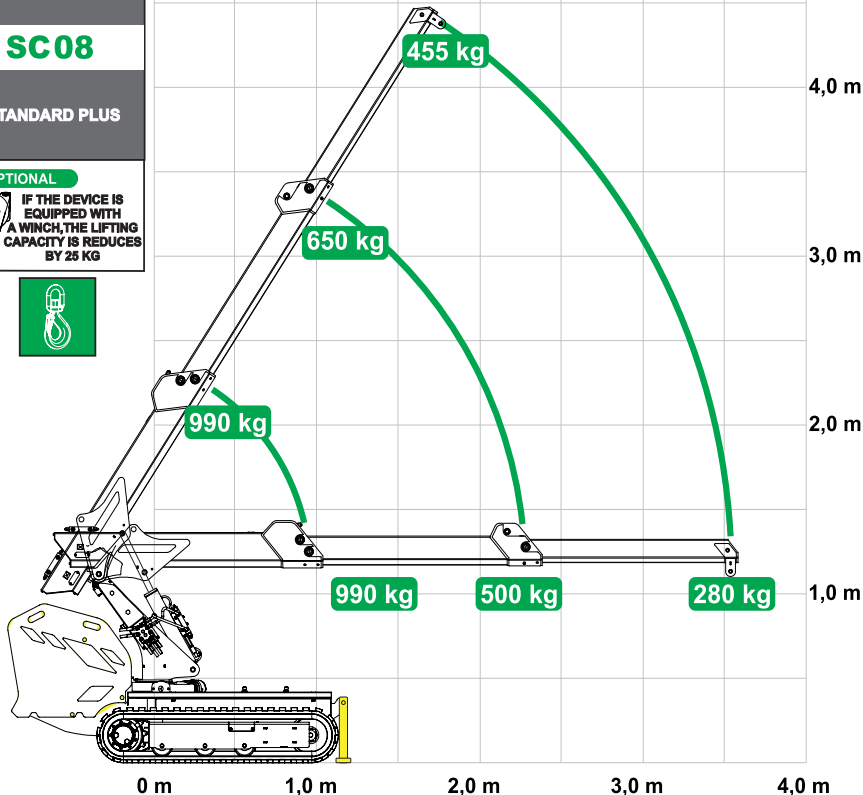
**SC08**

**STANDARD PLUS**

**OPTIONAL**



IF THE DEVICE IS  
EQUIPPED WITH  
A WINCH, THE LIFTING  
CAPACITY IS REDUCES  
BY 25 KG



Stationary only work - not pick and carry. Work only with unfolded (open) support legs.